

Teamcenter Engineering: Integrations for I-deas NX Series

Multi-site engineering collaboration for any size team using I-deas NX Series

fact sheet

www.ugs.com

► Summary

Teamcenter® Engineering's integration for I-deas® NX™ Series allows you to reduce your product development cycle times and cost by enhancing your I-deas environment to support multi-site collaboration for any size engineering team, while enabling access to a full range of enterprise-wide product lifecycle management (PLM) capabilities to further optimize your product development processes.

Business challenges

Are your I-deas design teams located in multiple sites, or spread across different companies in your supply chain?

Are your products designed using multiple CAD systems?

Do your engineering and enterprise teams have difficulty accessing and sharing product information?

Do your product change and approval processes take too long?

Choose the integration solution that meets your business needs:

If you need to get your I-deas data vaulted, consider Manager for I-deas NX Series: CAD data management plus entry-level Teamcenter Engineering secure vaulting functionality (upgrade at any time to full Teamcenter Engineering capabilities).

If you need to connect your I-deas data with the processes of your product engineering team, consider Integration for I-deas NX Series: CAD data management add-on to full Teamcenter Engineering capabilities, including engineering process management.

Multi-site engineering collaboration

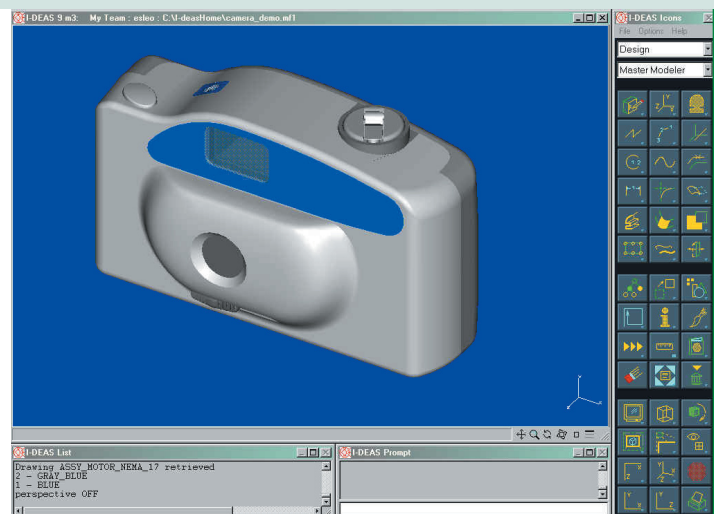
Teamcenter Engineering's capabilities for integration with I-deas NX Series go beyond the workgroup CAD data management capabilities delivered with I-deas Team Data Manager (TDM), enabling design teams of any size, in different locations and through your supply chain, to work closely together to streamline product development

processes through multi-site collaboration. All design information created using I-deas is captured, controlled and shared by your global development teams in a single, highly secure environment, while version management and access control ensure that the right people get the right information at the right time.

Using one of the Teamcenter Engineering integrations with I-deas, I-deas design teams can quickly search and access I-deas parts, assemblies and drawings to eliminate time wasted trying to find and share design information between distributed design teams and their suppliers, while reducing change orders by ensuring that everyone is working from the latest design information.

Extend the value with additional PLM capabilities

Multi-CAD collaboration. Multi-CAD support enables design teams to create and modify component designs on any major CAD system, and assemble their innovations/modifications into a multi-CAD product design. The integration with I-deas synchronizes the product information to ensure that all teams are working from the latest designs, while automatically managing both native and neutral CAD



Features

The Teamcenter Engineering integrations with I-deas provide users with a direct interaction between their I-deas environment and Teamcenter Engineering. Once you deploy the integration, you no longer require I-deas Team Data Manager (TDM).

The integrations with I-deas support a variety of key features, including the ability to:

- Create and edit I-deas parts, drawings and assembly relationships in Teamcenter Engineering
- Perform partial load (prune) and load merge (unprune) to efficiently manage large assemblies
- Create version updates for work in progress as well as product revisions
- Migrate data from Team Data Manager
- Provide on-demand access to the user's workspace under Teamcenter Engineering
- Implement security and data access controls in conformance with Teamcenter Engineering policies

UGS services

UGS services provide you with the latest Teamcenter solutions. Standard packages address a range of solution needs accommodating your data, your business logic, your configuration, your integrations, all for competitive costs.

representations to eliminate unnecessary delays caused by constantly translating data. Its innovative approach to multi-CAD collaboration enables your extended enterprise to leverage other CAD investments in addition to I-deas.

Engineering process management. The I-deas integration's optional engineering process management capabilities surpass those of traditional CAD file management by capturing all relevant product and process information and relating these assets to a common product structure. In addition to managing all of your related CAD, CAM and CAE information, the integration can manage design specifications, documents, requirements and other types of product information. The I-deas integration's process management capabilities enable you to define engineering workflows allowing you to manage changes, enforce company-specific business rules and efficiently execute your automated product-related processes.

Feature checklist

- Load and save to/from I-deas bins
- Revision control
- Check-in/check-out
- Prune/unprune
- Update/refresh
- Load DirectModel (JT) parts and assemblies
- Import/export with Team Data Manager
- Create, configure and edit assemblies through Teamcenter Engineering or I-deas
- Create and vault DirectModel to facilitate digital mockup

Scalable solutions

Teamcenter Engineering solutions are scalable to meet your growing requirements:

- *Change management* – Manage engineering changes and work in progress
- *Advanced configurations* – Manage options, variants and effectivity
- *View and mark-up* – Provide access information during the review process
- *Digital mockup* – Digitally validate product configurations

Configuration

Contact your account representative for supported configurations.

► Contact UGS

Americas 800 498 5351
Europe 44 1276 705170
Asia-Pacific 852 2230 3333
www.ugs.com

